

EDUCATIONAL CORPORATION

YUKIYOSHI INSTITUTE OUTLINE



Kobe Women's University
Kobe Women's University Graduate School
Kobe Women's Junior College
Kobe Women's Education Center

MISSION STATEMENT

The purpose of our institution is to educate women who will help build a democratic and culture-oriented nation that will contribute to world peace and the welfare of humankind.

To realize this goal, our institution aspires to educate women of character, who will strive to build a peaceful nation and society, respect truth and justice, appreciate the value of each individual, esteem work and responsibility, and develop an independent spirit in body and mind.

EDUCATIONAL PRINCIPLES

- *Cultivate intelligent women who will have a broad vision and a sharp insight into life and society.
- *Promote individuality and educate capable women who are able to contribute to society.
- *Nurture a love for labor, respect for duty and obligation and confidence to act independently.
- *Cultivate women, who, with spiritual sentiments, are modest and affectionate, able to endure hardship and exhibit their faith in their daily lives.
- *Educate women, who are healthy in body and mind, to become potential leaders of the next generation.

The history of Yuki-yoshi Institute begins in 1950 with the founding of Kobe Women's Junior College, one of the first junior colleges in Japan, with the aim of preparing and educating women who will promote world peace and contribute to the common good of society. The institute expanded by adding Kobe Women's University in 1966; graduate school programs were started in 1984 and we now offer degrees in the Graduate School of Life Science, Graduate School of Literature, Graduate School of Nutrition and Health Science, and Graduate School of Nursing.

Our Mission Statement has not changed since Kobe Women's Junior College first opened its doors. We hold that our university function as a seat of learning, research and community service. We aim to be an institution attractive to students, of value to the community and relevant to the times, while nurturing their independence, communicative ability, and creativity as they study in this cosmopolitan city of Kobe.

Student Capacity

Kobe Women's University	Academic Year 2019	Academic Year 2020	Academic Year 2021	Academic Year 2022
Faculty of Literature				
Department of Japanese	240	240	240	240
Department of English	240	240	240	240
Global-Local Studies Department	160	160	160	160
Department of History	240	240	240	240
Department of Education	660	660	660	660
Faculty of Health and Welfare				
Department of Social Welfare	320	320	320	320
Department of Health, Sports and Nutrition	300	320	320	320
Faculty of Home Economics				
Department of Home Economics	320	320	320	320
Dietician Training Course	610	620	620	620
Faculty of Nursing				
Department of Nursing	330	340	350	360
Specialized Program				
Advanced Course in School Education	15	15	15	15
Total	3,435	3,475	3,485	3,495

Kobe Women's University Graduate School	Master's Course		Doctor's Course		Total
	Annual	Total	Annual	Total	
Graduate School of Life Science					
Nutritional Science	8	16	2	6	22
Interior Space Design	6	12	2	6	18
Graduate School of Literature					
Japanese Literature	4	8	2	6	14
English Literature	4	8	2	6	14
Japanese History	4	8	2	6	14
Education	4	8	2	6	14
Graduate School of Nutrition and Health Science					
Nutrition and Health Science	4	8	NA	NA	8
Graduate School of Nursing					
Nursing	8	16	3	9	25
Total	42	84	15	45	129

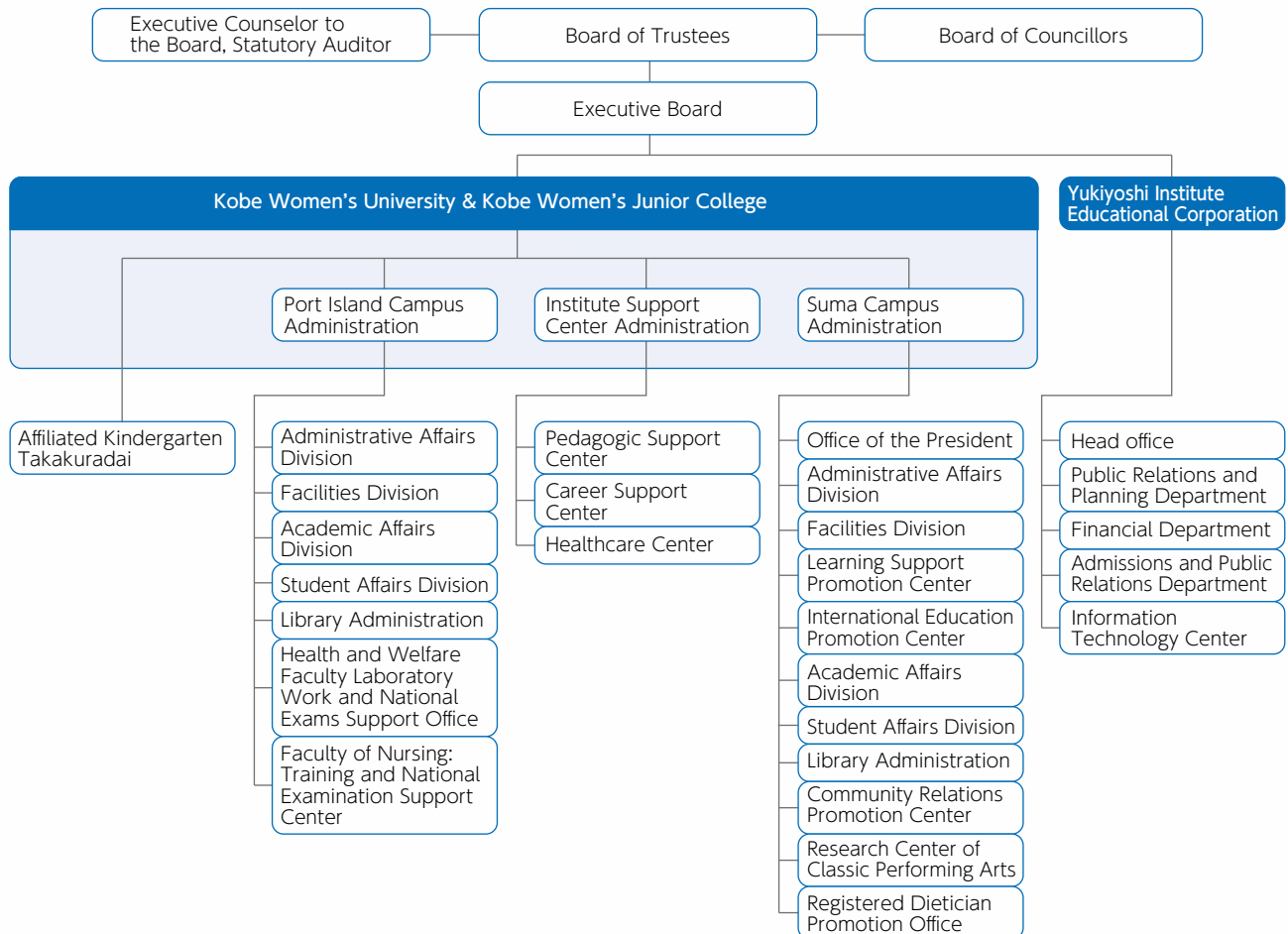
Kobe Women's Junior College	Academic Year 2019	Academic Year 2020	Academic Year 2021	Academic Year 2022
Department of Arts and Sciences	240	240	240	240
Department of Food and Nutritional Science	240	240	240	240
Department of Childhood Education	200	200	200	200
Total	680	680	680	680

Campus Area Suma Campus 133,389.12m² Port Island Campus 24,524.84m² Sannomiya Campus 4,174.00m²

Kobe Women's University	Faculty of Literature	Department of Japanese
		Department of English
		Global-Local Studies Department
		Department of History
		Department of Education
	Faculty of Health and Welfare	Department of Social Welfare
		Department of Health, Sports and Nutrition
	Faculty of Home Economics	Department of Home Economics
		Dietician Training Course
	Faculty of Nursing	Department of Nursing
Specialized Program	Advanced Course in School Education	
Affiliated Takakuradai Kindergarten		

Kobe Women's University Graduate School	Graduate School of Life Science	Nutritional Science
		Interior Space Design
	Graduate School of Literature	Japanese Literature
		English Literature
		Japanese History
Graduate School of Nutrition and Health Science	Nutrition and Health Science	
Graduate School of Nursing	Nursing	
Kobe Women's Junior College	Department of Arts Science	
	Department of Food and Nutritional Science	
	Department of Childhood Education	
Social Welfare Corporation Shinjo Kizuna Kai		Shinjo Nakayamate Nursery School

ADMINISTRATION



FACULTY OF LITERATURE

Department of Japanese

Students can freely choose to study from among the three loosely-defined course areas of Japanese Literature, Classic Performing Arts, and Japanese Language. By analyzing Japanese language and literature, students can deepen their understanding of society and trends of thought. Students can take courses to train to become teachers of Japanese to speakers of other languages. With enhanced reading and writing skills, students are equipped to face the modern world.

Department of English

Two courses are offered in this department:

- English / English Language Teaching
- English Literature

Understanding English language and culture cultivates one's sensitivity and tolerance, thus opening the door to a new world. Throughout the course, students will study both British and American literature, history and culture to have better understanding of the cultures.

Global-Local Studies Department

The characteristic of this department is to develop the spirit of "taking action" and "learning." Our study-abroad programs give students a chance to be exposed to different countries. We prepare our students so they may adapt and embrace new cultures, offering the valuable experience of what it is like to live abroad. Students study English and can choose either Chinese or Korean. We emphasize the importance of social sciences and international relations and cooperation as part of this course.

Department of History

This department consists of three groupings of courses:

- Japanese History
- European / Asian History
- Japanese Archaeology / Folklore

Studying history is not only an elucidation of the past but also helps foresee the future, thus preparing one for the future. Here students learn to examine and analyze historical sources.

Department of Education

There are three groupings of courses in this department:

- Elementary School Teaching
- Early Childhood Education
- Psychology

Future teachers, including pre-school teachers, can choose to take subjects in all groupings. Students obtain insight into childhood development in order to become capable teachers to different age groups.

FACULTY OF HEALTH AND WELFARE

Department of Social Welfare

In today's society with its declining birthrate and ever-increasing number of senior citizens along with the widening income gap, there is urgent need to help those burdened by the problems of everyday life, such as the elderly, people with disabilities or other special needs. With respect for all and promotion of health and welfare as our basic principle, this department trains professionals who can with intelligence, sensitivity, and expertise actively work for the betterment of society and the world where everyone can live respected in their community and achieve self-actualization. Toward this end, students are given guidance to pass the national exams for qualifying as social workers in the welfare and mental health fields and as caregivers.

Department of Health, Sports and Nutrition

Our program trains students in the foundations of nutritional science needed for promoting good health as well as nutrition basics and physical training specifically for athletes. There are also courses on the food culture of various countries and dietary management in times of crisis. Prevention of chronic illness arising from poor diet and lack of exercise as well as the importance of food and nutrition from childhood through old age and for those who take part in sports are covered from a global perspective.

FACULTY OF HOME ECONOMICS

Department of Home Economics

This department offers courses and conducts research on various aspects of everyday life. Students can take courses from a wide range of fields including clothing, food, housing, family, family finances, community, social systems, and residential environment while specializing and practicing in the three cluster areas of Science of Clothing Design, Residential and Environmental Design, and Producing Lifestyle Design. The curriculum stresses the importance of conducting experiments, practicing skills and doing fieldwork. It is also structured to enhance the ability of students to consider and use their creativity as they aim to become specialists or home economics teachers, helping to solve problems and produce better living environments in the home, in the community, and in the world.

Dietician Training Course

Due to diversifying diet and lifestyle-related diseases of recent years, there is a growing awareness of and appreciation for dietetic knowledge and nutritional values. Students prepare for the National Registered Dietician Exam which accords the status of expert in food and health. Courses in this department cover basics including laboratory work. Our facilities for medical care and health welfare, nutrition education and food processing allow students to learn and practice under simulated real-life conditions in which they can systematically develop the necessary skills.



Department of Nursing

This department will provide opportunities for students to study and gain knowledge to find meaningful roles in society as healthcare or welfare professionals. Students are empowered to make a difference in their communities through knowledge of medicine, nutrition, and welfare. The curriculum also includes practical experience and guidance to pass the national exams. Students may pursue licensing as nurses, public healthcare workers, midwives, or school nurses.

Liberal Arts Subjects for All Departments

These are the group of subjects that any student can choose across the boundaries of faculties or departments. Firm academic basis can be established through studying courses offering various perspectives and sense of values. The Common Liberal Arts Subjects for all departments can largely be divided into the groups below.

Core Subjects

These are the groups of subjects that are most emphasized and set the educational goal of our university. They consist of three fields of <Basic>, <Women> and <Region>.

Basic Subjects

These are the subjects set for the purpose of thoroughly cultivating basic physical fitness, intellectual capability and skills.

- 1) Languages: In addition to English, the students can learn six languages - German, French, Chinese, Korean and Italian. We offer classes based on ability and interests.
- 2) Information: We offer a wide range of technology courses from checking basic technologies, creating websites, up to CG (3D Image) technologies depending on level. The PC network extends throughout the campus.
- 3) Wellness Field: Physical strength is the basis of all activities no matter what field the student majors in. Courses are offered on as well as Off campus.

General Subjects

These are the liberal arts subjects set for the purpose of acquiring a wide vision and learning how to get both flexible and enhanced sensitivity. We offer nine fields where the students can freely design their own curriculum depending on their interests. Furthermore, we offer interdisciplinary Liberal Arts Seminars.

Seminar Subjects (Liberal Arts Seminar)

These are small-class seminars taught by professors from all departments.

Qualification Acquisition and Qualification Support Subjects

We offer qualification acquisition subjects such as Japanese language instructor or librarian. In addition, we also offer subjects for building career plans for women in collaboration with the Career Support Center.

Credit Transfer Subject from Studying Abroad

These are the subjects where recognition of credits will be given from the study-abroad programs based on the agreements concluded with universities in various areas such as the United States, Europe and Asia.

Credit Transfer from Three Universities on Port Island

Students on the Port Island campus can take classes at the other three universities there: Hyogo University of Health Science, Kobe Gakuin University and Kobe Women's Junior College. This opportunity encourages students to take courses for their future enhancement.

KOBE WOMEN'S UNIVERSITY SPECIALIZED PROGRAM



As society becomes increasingly more complex, so do the environments surrounding our children. Educators today must have sound techniques and a breadth of knowledge as well as a broad perspective and flexibility of thought. This course was established to fulfill these needs in school education. Students are guided through individual tutoring to become competent, resourceful teachers in the classroom.

KOBE WOMEN'S UNIVERSITY GRADUATE SCHOOL

GRADUATE SCHOOL OF LIFE SCIENCE

Nutritional Science

Food is the foundation of life and health, an essential part of our lifestyle and culture. Various specialists on food processing and health issues guide the students in their basic and applied research. University students as well as professionals are encouraged to participate in research.

Interior Space Design

Students study how shapes and forms are interrelated as well as the aesthetics of daily life. In other words, various things or events required for human beings to live comfortably are the targets for the research. We offer professional training integrating various fields related to "Living Arts and Design," foster members of society to be well-informed of human life, and aim for producing talented researchers or educators who respond to the needs of society.

GRADUATE SCHOOL OF LITERATURE

Japanese Literature

Highly specialized studies are offered in both Japanese literature and linguistics. Based on a broad perspective, students are required to take an analytical, logical approach. Throughout the master's course, we focus on developing researchers as well as teachers and specialists who will work in cultural and educational institutes. In the doctoral course, students are trained in thesis writing and are guided towards becoming independent researchers.

English Literature

Through studies in English literature, language and culture, we aim to educate professionals and researchers with advanced language skills. In the master's course, we focus on objective text analysis and theoretical development in British and American literature. The course focus is also on English linguistics and applied linguistics (Bilingualism / Translation Theory / Teaching English), while encouraging students to absorb the cultures of English-speaking countries. In the doctoral course students are required to complete a thesis based on the knowledge and results obtained during their course work.

Japanese History

Along with ancient, medieval, and modern history, we also explore Japanese archaeology, folklore, and world history at higher levels of research and education. In the master's course as well as in the doctoral course, thesis guidance is provided; instructional support is also provided for the specialized professions of museum curator and cultural property administrator.

Education

Consisting of programs in pedagogy, school pedagogy, educational psychology and clinical psychology, courses offered include: Educational Philosophy, Japanese and European History of Education, Social History of Education, Didactics, Early Childhood Pedagogy, Developmental Psychology, Cognitive Psychology and Clinical Psychology. The master's course trains qualified teachers and specialists in education and the doctoral course trains researchers in pedagogy and psychology.

Graduate School of Nutrition and Health Science

Nutrition and Health Science

The main objective of the program is to have students learn how to have people live a long life through healthy living. Research on health and how it is affected by exercise, welfare and nutrition is a major focus of the program. Students will gain comprehensive training required to become successful researchers and clinicians, both nationally and internationally.

Graduate School of Nursing

Nursing

In the master's program, we aim to cultivate students' deep understanding and appreciation for life and the essential nature of nursing as a practical science, and to train nursing professionals with outstanding skills. In the doctoral program, we aim to raise educators with high ethical standards who can not only teach well but also conduct high-level research in order to contribute to the further development of nursing science. As well-trained and highly qualified professionals both in the practical as well as administrative fields, our graduates will give back to society as they work in healthcare and medical welfare facilities.

*The graduate school offers special entrance exams for lifelong students or those working full time.
The Graduate School of Literature and Graduate School of Nursing offer both day and night classes.

KOBE WOMEN'S JUNIOR COLLEGE

DEPARTMENT OF ARTS AND SCIENCE

Students gain basic knowledge in clothing, food, housing, information processing, and business practices needed for living in today's world. There are ten groups of subjects for students to choose from: basic design, fashion design, food design, housing design, beauty design, business, communication, information, psychology, and training courses for teachers and civil servants. Students can choose freely from among these subjects as they plan their course of study for their future careers and for the qualifications they hope to acquire. Since 2013, the curriculum has been changed to include practical language education, qualifications needed for future jobs, and certification exams.

DEPARTMENT OF FOOD AND NUTRITIONAL SCIENCE

This department trains dieticians to work in society who possess a wide range of professional knowledge. Currently, we offer training for taking action on various problems involving food by implementing health education focused on "dietary education" and "food allergies." Students can acquire the dietician license at graduation by earning certain credits. Besides the dietician license, students can acquire qualifications for taking the exams for nutrition educator and food specialist, and for food scientist. The program provides additional support for students wishing to pursue a career as a registered dietician. Assistance is provided to students who plan on transferring to a four-year university, and courses are offered to prepare students for the national exam.

DEPARTMENT OF CHILDFOOD EDUCATION

This department trains students to become early childhood educators with sound professional knowledge in childcare, education, and welfare matters who can support parents, as well as respond with flexibility and appropriateness to issues arising in childcare environments. Classes are small to allow for close support from experienced faculty who can also advise students in career choices. Guidance is provided to graduates who wish to seek employment in nursery schools, kindergartens, and among companies conducting business in products or services for children, as well as to those wishing to transfer into four-year colleges or universities.

General Education Courses

Students in all three departments can take courses offered in the following subject areas, thereby gaining a solid base for further study as well as cultural breadth and wider perspectives.

Subject Areas

Emotional and Physical Health: to cultivate emotional and physical health

Communication : to acquire effective language and conversational skills

Refining Sensitivity : to heighten the senses by studying literature, culture, and other arts

Gaining Better Employment Skills: to support professional and vocational independence throughout life

Understanding Society : to lay a strong foundation for living and working in modern society

Transfer Credits : students can build a rich and varied life by enrolling in courses offered by all three Port Island universities (Hyogo University of Health Sciences, Kobe Gakuin University, and Kobe Women's University) and the Open University of Japan

KOBE WOMEN'S UNIVERSITY EDUCATION CENTER

The Sannomiya Campus Education Center, located at Yuki-yoshi Institute's original site, is used by the graduate school, the Open College, workshops and conferences, as well as serving the community in many ways.

◆ Research Center of Classic Performing Arts

Established in April 2001 for the purpose of research and study of classical performing arts, the Center houses archives on medieval performance (Noh drama, Kyogen), early modern performance (Joruri, Kabuki), folkloric performance and Okinawan rituals, ranging from specialized documents to books for beginners. Through regular exhibits, special exhibits, workshops and symposia, the Center offers the public the chance to gain deeper understanding of the classical and folk performing arts.

(Hours: Monday-Friday from 10am - 5pm. *Closed on national holidays, November 11, and certain other days.)

◆ Yuki-yoshi Institute Memorial Room

Since its opening in April 2007, items related to the founders, Mr. and Mrs. Yuki-yoshi, and the institute's history are exhibited here. On display are a chronological table and photographs, awards conferred upon the Yuki-yoshis as well as works of art and other memorabilia.

(Hours: Monday-Friday 10am-4pm. Closed Saturdays, Sundays, holidays, and August 13-17, December 27-January 5.)

◆ Open College

As part of its outreach to society, the Open College, established in 2003, offers classes primarily to adults in the community. Over the years, quarterly offerings have increased and students are enrolled in a variety of classes throughout the year.

◆ Facilities for Hire

Lecture rooms and the gymnasium are available for workshops, lecture presentations, conferences, various examinations and community events. Its ideal location makes it a highly sought-after venue.

TIMELINE OF THE YUKIYOSHI INSTITUTE

November 1940	Kobe Women's School of New Fashion is founded by Kuniyoshi and Kaname Yukiyooshi. Kaname assumes role of principal	
April 1950	Kobe Women's Junior College Apparel Department established. Kaname Yukiyooshi becomes its first president	
February 1951	Status as educational corporation approved. Kuniharu Yukiyooshi becomes the first chairperson of the board	
April 1953	Kobe Women's Junior College Department of Home Economics established	
April 1955	Kobe Women's Junior College Department of Primary Education established	
April 1966	Kobe Women's University Faculty of Home Economics established. Kaname Yukiyooshi becomes the first president	
April 1969	Kobe Women's University Faculty of Literature established	
April 1973	Affiliated Takakuradai Kindergarten founded	
March 1983	Partnership between Kobe Women's University and University of Hawaii (Manoa)	
April 1984	Kobe Women's University Graduate School established with programs in Nutritional Science	
April 1986	Kobe Women's University Graduate School established with programs in Japanese History, Japanese Literature and English Literature	
April 1987	Graduate program in Education started	
April 1989	Kobe Women's University Seto Junior College with Departments in English and Arts and Science established in Seto Town, Okayama Prefecture. Doctoral course in Education and Nutritional Science added to the graduate school	
November 1990	50th anniversary celebration of Yukiyooshi Institute	
April 1991	Doctoral course for Japanese History added to the graduate school	
April 1992	Doctoral course in English Literature added to the graduate school Kobe Women's Junior College relocated to Port Island	
March 1993	Partnership between Kobe Women's University and University of Kent (UK)	
April 1993	Doctoral course in Japanese Literature added to the graduate school	
January 1995	Great Hanshin-Awaji Earthquake causes severe damage to university, junior college and kindergarten	
April 1995	Kobe Women's University Graduate School program in Interior Space Design started	
April 1996	Department of Social Welfare added to Kobe Women's University Kobe Women's Junior College restructured into Department of Arts and Sciences and Department of Food and Nutritional Science. Department of Elementary Education so renamed	
January 1997	Partnership between Kobe Women's University and University of Freiburg, Germany	
April 1997	Doctoral course in Interior Space Design added to the graduate school	
October 1999	Sannomiya Campus renovated; Kobe Women's University Education Center established there	
May 2000	Partnership between Kobe Women's University and South China Normal University (China)	
November 2000	60th anniversary celebration of Yukiyooshi Institute	
May 2004	Kobe Women's University Seto Junior College closed	
April 2006	Health and Welfare, Japanese and English Departments restructured. Kobe Global-Local Studies Department added to Kobe Women's University Partnership with Gadjah Mada University (Indonesia) (until March 2011)	
August 2006	Partnership with Pitzer College (USA)	
August 2007	Partnership with Cenderawasih University (Indonesia) (until July 2012)	
April 2009	Kobe Women's University Faculty of Health and Welfare Department of Health and Welfare renamed Department of Social Welfare. Department of Health, Sports and Nutrition added to the same faculty Kobe Women's Junior College restructured its Department of Childhood Education	
January 2010	Partnership with Udayana University (Indonesia)	
March 2010	University and Junior College awarded accreditation by Japan University Accreditation Association and Japan Association for College Accreditation, respectively	
April 2010	Partnership with Xi'an Polytechnic University (China)	
July 2010	Partnership with Kasetsart University (Thailand)	
November 2010	70th anniversary celebration of Yukiyooshi Institute	
January 2011	Partnership with Chiang Mai University (Thailand)	
May 2011	Partnership with California State Polytechnic University, Pomona	
September 2011	30th anniversary celebration in Hawaii of partnership with University of Hawaii	
May 2012	Partnership with Universitas Airlangga (Indonesia)	
August 2014	Partnership with Providence University (Taiwan)	
April 2015	Department of Nursing added to Kobe Women's University	
April 2016	Graduate School of Nutrition and Health Science, Nutrition and Health Science (Master's course) added to the graduate school	
March 2017	University and Junior College awarded accreditation by Japan University Accreditation Association and Japan Association for College Accreditation, respectively	
April 2018	Kobe Women's University Faculty of Literature Kobe Global-Local Studies Department renamed Global-Local Studies Department	
April 2019	Graduate School of Nursing added to the graduate school	

Kaname Yukiyooshi Kuniharu Yukiyooshi

EDUCATIONAL CORPORATION YUKIYOSHI INSTITUTE Yukiyooshi Institute Educational Corporation

Public Relations and Planning Department

4-7-2 Minatojima Nakamachi, Chuo-ku, Kobe City, 650-0046 Japan

TEL 078-303-4790 FAX 078-303-4857

URL <http://www.yg.kobe-wu.ac.jp/>